



Thermal imaging helps to build high-performance electrical racing car

Every year, engineering students from around the world are challenged to design and build a single-seat racing car in order to demonstrate their knowledge and talent. In a worldwide competition, called Formula Student, this racing car is then put to the test in static and dynamic events, which test the performance of the vehicle. Mechanical engineering never gets more exciting than this! The Technical University of Delft in the Netherlands (TU Delft) has been participating in the Formula Student competition since 2001. Again in 2014, TU Delft's DUT Racing team is aiming at designing the most efficient and high-performance electrical racing car, this time with the help of thermal imaging cameras.

Formula Student aims to inspire and develop enterprising and innovative young engineers. This high-performance engineering project is not only extremely valued by colleges and universities worldwide, it is also viewed by the motorsport industry as the standard for engineering graduates to meet, transitioning them from university to the workplace. Formula Student started back in

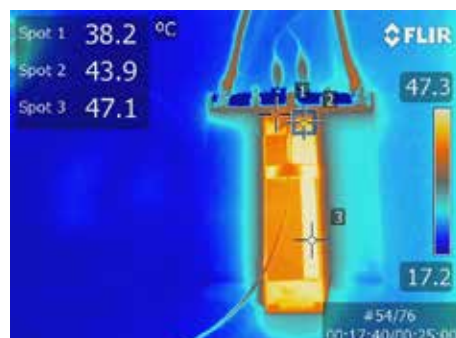
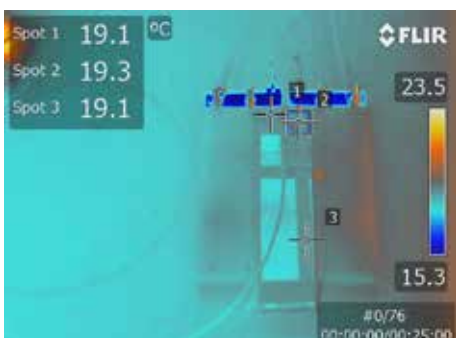
1981 in the US and came to Europe in 1998. TU Delft participated for the first time in 2001 and even allows students to choose Formula Student as a minor. Today, the Formula Student competition is joined by over 500 teams. The DUT Racing team now consists of 80 people, of which seven full-timers and fifteen minor students.

Students of the DUT Racing team are housed at the impressive D:DREAM hall at the Delft University campus and they can make use of the most advanced technologies out there to design their racing car. One of these technologies is thermal imaging. When designing an electrical car, it can be important to monitor temperatures in real time. In the case of DUT Racing team, a thermal imaging camera from FLIR Systems is used to check for hot spots in battery cells, monitor the temperature profile of car tires and test car electronics.

Lightweight components

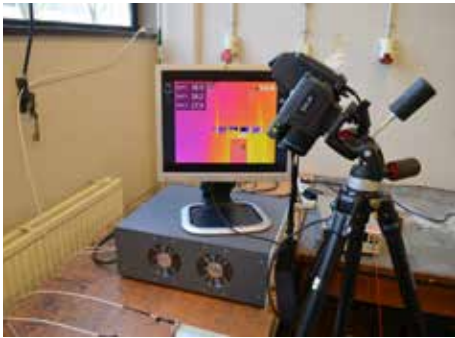
One of the major issues that the Delft team is famous for is making lightweight vehicles. With the DUT cars, every unnecessary gram is removed in the design stage. This lightweight design philosophy, which is known as 'the Delft concept' has resulted in impressive figures. The 2013 DUT car weighs 175 kg and for 2014, the DUT racing team is aiming for 155 kg. Many competing teams are struggling to build cars even below 200 kg.

The attention to weight applies to almost every car component. "In the case of car batteries, the more energy – Joules – you require, the more weight you will need," says



The FLIR T640 is used to detect hot spots of battery cells with different load cases.

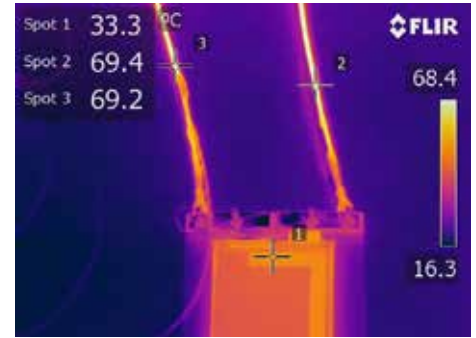




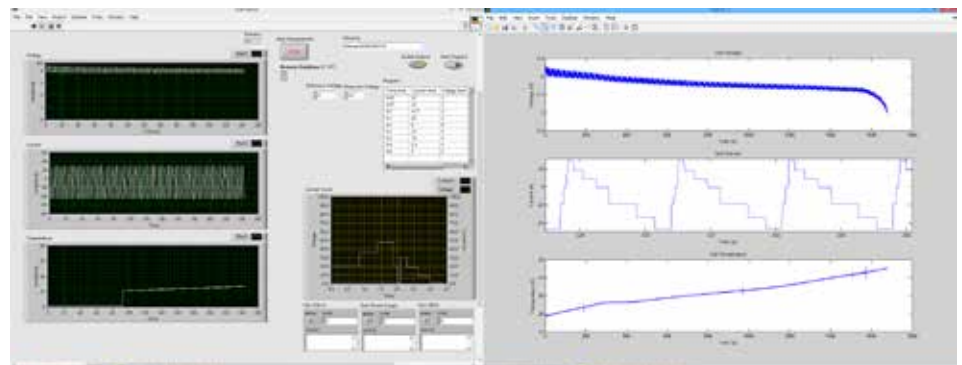
Monitoring a battery cell for hot spots



Cables with a low current rating are put to the test. If approved for use, these cables will contribute to keeping the weight of the car low.



Bauke Kooger, Chief Accumulator at the DUT Racing team. "We use a FLIR T640 thermal imaging camera to monitor the temperature and detect hot spots of battery cells with different load cases. To this end, we simulate cycles that are typical of an endurance race, which is part of the competition's dynamic tests. This way, we want to be able to see where we need to place the temperature sensors and how we need to size the cooling system. Also, the FLIR thermal imaging camera allows us to see hot spots located at bad connections in an assembled accumulator."



Graphical report of a test cycle of a battery cell test, where temperature values are set out against current and voltage values

Even cables are tested. During a current test, the DUT team is checking whether using a cable with a lower cable current rating is detrimental for the performance of the car. If not, it would allow the team to use even lighter cables.

With the temperature information we receive from the thermal imaging camera, we can adjust the suspension of the car."

print board gets integrated into the car. We also think of using thermal imaging cameras to monitor the curing process of the several Carbon-fiber-reinforced polymer (CFRP) products that are integrated into the car.

The weight issue also applies to the car tires, as wider tires will provide more grip, but will also be heavier. "We design the tires ourselves," says Marinus Geuze, Chief Electronics at the Delft Formula Student team. "With the FLIR thermal imaging camera, we can monitor the temperature profile of the tire. A uniform temperature across the full tire surface is very important in terms of perfor-

Thermal imaging in any design stage

The use of thermal imaging does not stop with monitoring tires and battery cells. "If we are looking at the entire one-year design and development process of the DUT racing car, there are few moments where thermal imaging cameras will not be useful," says Marinus Geuze. "We also want to use thermal imaging to test our printed circuit boards and see which components get hot when in operation. This way we can adapt the design if necessary prevent problems before the final

FLIR T640 camera

The FLIR T640 is a handheld thermal imaging camera that combines an ergonomic design, great flexibility and extremely high image quality. With the crisp thermal image of 640 x 480 pixels the smallest of details can be seen. An intuitive user interface with touch screen make the FLIR T640 very easy to use.

"The important thing for us was obtaining good video images to be able to really monitor the component behavior during a cycle in real-time," says Bauke Kooger. "We definitely like the resolution and image quality of the FLIR T640. And the camera is so easy to use, that you hardly need any training to get started."



The current DUT car weighs 175 kg, whereas many competing teams are struggling to build cars even below 200 kg.

For more information about thermal imaging cameras or about this application, please contact:

FLIR Commercial Systems

Luxemburgstraat 2
2321 Meer - Belgium
Tel. : +32 (0) 3665 5100
Fax : +32 (0) 3303 5624
e-mail: flir@flir.com
www.flir.com

The images displayed may not be representative of the actual resolution of the camera shown. Images for illustrative purposes only.